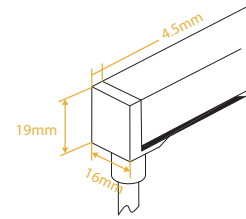


Silicone Injection-moulded Front Connector-Bottom



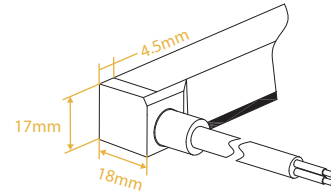
FXN - 1617 - F - C - SIM - FB



Silicone Injection-moulded Front Connector-Side



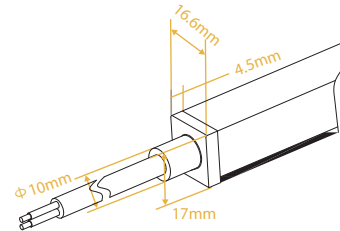
FXN - 1617 - F - C - SIM - FS



Silicone Injection-moulded Front Connector-End



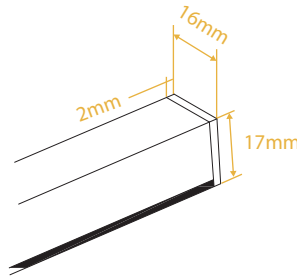
FXN - 1617 - F - C - SIM - FE



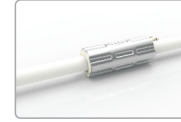
Silicone Injection-moulded End Cap



FXN - 1617 - F - C - SIM - EC

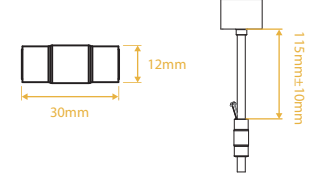


Anti-wicking Ferrule



The anti-wicking ferrule is located at 115mm (± 10 mm tolerance) from the connector on the cable.
For protection against water ingress from inside of cable wire and hence damage the light.

Note:
1. Unless otherwise stated, the tolerance is ± 0.5 mm.
2. The removal of anti-wicking ferrule will void the warranty if any water ingress caused by it.



Male & Female Connector



For plug and play cable junction, IP67.

FXN - 1617 - F - MC / FXN - 1617 - F - FC

Note:
Unless otherwise stated, the tolerance is ± 2 mm.

